

Lesson 4 - Real-World Use Cases

THE MAGIC TRICK OF TODAY

**"Chatbots are like real people, but they're not. It's
an illusion of intelligence."**

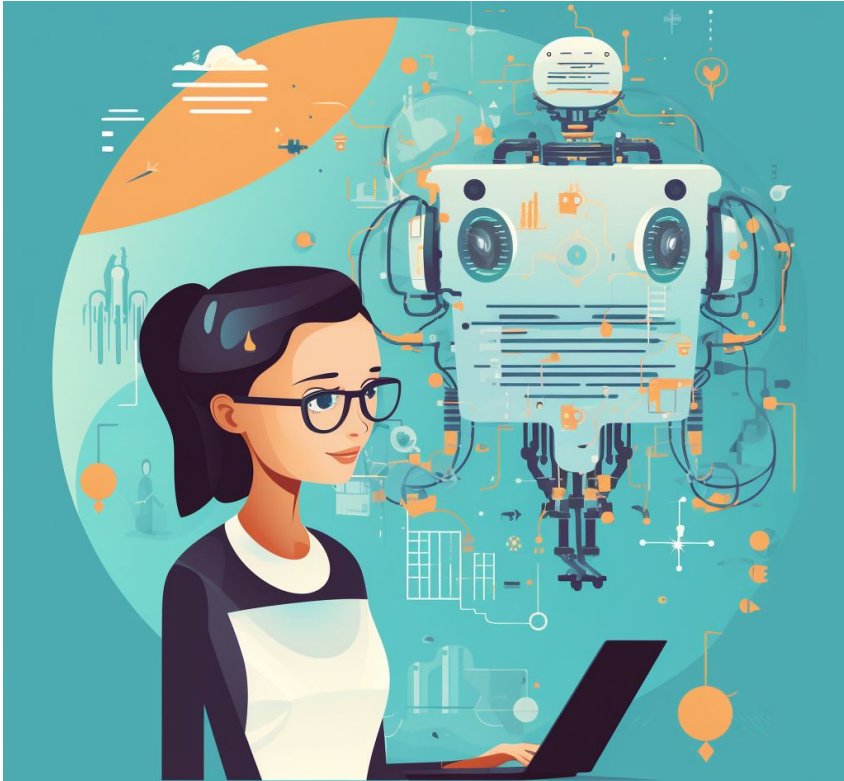
Rollo Carpenter, creator of Cleverbot chatbot

Physical/Mental Healthcare AI Chatbot



- Provide automated screening and triage for common conditions
- Assist patients in tracking symptoms, medications, appointments
- Offer personalized guidance and recommendations
- Enable 24/7 on-demand access to health information
- Reduce burden on human healthcare providers
- Supplement therapists by helping with exercises, check-ins
- Monitor patients' mental health between appointments
- Deliver automated therapy content for common issues
- Pose as virtual patients to help train medical students
- Analyze speech and linguistic patterns for health insights
- Process and explain medical paperwork and insurance information
- Book appointments and prescription refills easily

Educational/Tutoring AI Chatbot



- Provide personalized instruction tailored to students' needs
- Adapt in real-time to students' learning pace and weaknesses
- Offer 24/7 on-demand support outside the classroom
- Assist with homework help and subject comprehension
- Deliver interactive lessons with voice, visuals, & games
- Provide feedback on assignments and assess mastery
- Recommend additional resources to fill knowledge gaps
- Motivate and encourage students to persevere
- Simulate historical figures or characters from books
- Act as virtual tutors for individual or group lessons
- Assist teachers by automating administrative tasks
- Analyze areas of difficulty across groups of students
- Train teachers through realistic classroom scenarios
- Automatically grade assignments for faster feedback

Personal Assistant AI Chatbot



- Provide hands-free access to information
- Integrate with smart home devices for home automation control
- Manage calendar appointments, reminders, lists and notes
- Give recommendations tailored to user preferences and habits
- Play music, podcasts, audiobooks on command
- Control TV, lights, appliances with voice commands
- Look up facts, weather, news, and local points of interest
- Set timers and alarms for cooking, productivity, etc.
- Tell jokes, play games, and have natural conversations
- Offer customer support for connected products and services
- Provide real-time translation of languages when traveling
- Place orders for household items and manage shopping lists
- Check traffic conditions and give ETAs for commutes
- Read aloud emails, messages, and notifications

Customer Service A.I. Chatbot



- Provide 24/7 automated assistance to customers
- Answer frequently asked questions instantly
- Access user accounts and order information as needed
- Offer recommendations based on purchase history
- Process simple orders, returns, cancellations
- Route complex issues to human agents
- Suggest relevant help articles or troubleshooting tips
- Enable self-service for common requests
- Reduce call volume at customer support centers
- Analyze user language to identify frustration
- Escalate priority cases automatically
- Guide users through account registration
- Collect customer satisfaction feedback
- Make reservations, book appointments as needed
- Submit warranty claims or returns forms
- Provide real-time status updates on issues



Thank you!



ChiefAIOfficer.com



CAIO@ChiefAIOfficer.com